

Small mammal trapping: Wellhouse Meadow, Haslingfield.  
 Friday 13th May 2022 - Saturday 14th May 2022

20 traps were set on Friday 13th May around and within Wellhouse meadow, between approximately 8pm and 9pm. They were set with bedding (hay), casters, oats, and apple. The traps were set within a variety of habitats within and around the meadow. They were opened from 7.45am on Saturday. Pippa Keynes, Lorraine Jobson and members of the public. The weather was calm and sunny, 16 degrees C on Friday evening. Dry overnight. Calm and sunny on Saturday morning.

Wellhouse Meadow is a large area of semi-improved grassland within the village, with areas of tall ruderal vegetation around three edges, and large areas of uncut grass; some mown paths and short grass surround an orchard area to the north. There is scrub on one border (behind which is a large pond); plenty of trees around the edges and a couple of mature trees within the meadow.

Table 1: results of trapping exercise, Wellhouse Meadow 13/14 May 2022

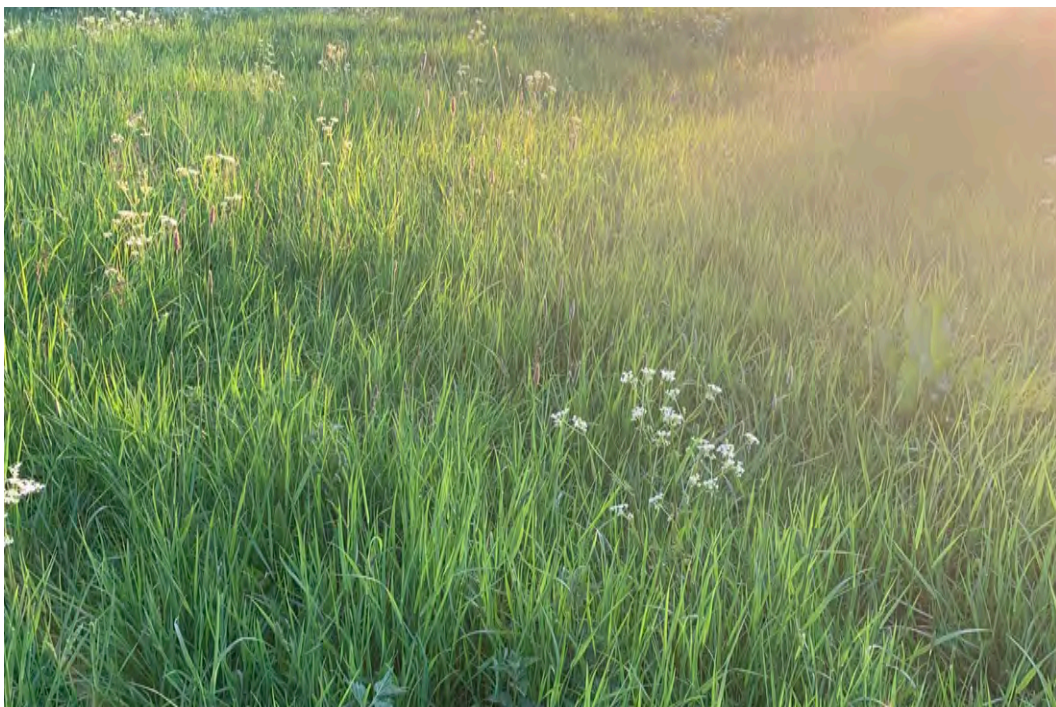
Trap number	Location	Result
95	Adjacent to the grass compost heap, southern boundary	O
99	Adjacent to the wall, southern boundary	O
100	Under the scrub edge, behind the Pump house (backing onto the pond)	D
11	Scrub/meadow interface (adjacent pond)	O
98	Scrub/meadow interface (adjacent pond)	O
92	In long grass of meadow, south of elder	O
14	Scrub/meadow interface (adjacent pond)	O
19	In long grass of meadow, north of elder (cowslip area)	O
93	Adjacent grass compost heap under trees on northern boundary	O
15	Tall ruderals/orchard border, northern boundary (near Walnut)	O
13	In long grass of meadow, adjacent to tall ruderal vegetation along 'damp' line	O
12	Northern border of meadow: interface between short grass of orchard and tall ruderal	T
96	Long grass of meadow, adjacent to mature aspen	O
97	Orchard, below apple tree (long grass surrounded by mown area)	O

Trap number	Location	Result
91	Long grass/cow parsley in main meadow, adjacent to mature trees (beech)	O
20	Adjacent to fence line on western boundary, lots of woody debris/ bare ground	O
17	Long grass in main meadow, adjacent to silver birch (in line with Wellhouse)	O
16	Long grass/ruderal vegetation on western boundary (in line with Wellhouse)	O
94	Long grass/cow parsley behind bench, southern part of meadow	T
18	Meadow	O

Key: O open  
T Triggered (empty)  
D Disturbed (pulled apart)

One trap had been disturbed, and was pulled apart. There is no evidence that a small mammal was inside. No animals were trapped.

Pippa Keynes  
1st June 2022



Caption

Map showing Wellhouse Meadow

